

**Before Ultraflo<sup>®</sup> hemihydrate liquid floor screed is poured, the building should be weather tight with the roof on and all doors and windows installed. Any openings which are not closed up should be made weather proof with polythene.**

### SUB-FLOOR PREPARATION

- (a) Scrape off any debris or mortar splashes from the subfloor.
- (b) Brush the subfloor, leaving a flat clean surface, on which to place the insulation.

### INSTALLING INSULATION

- (a) Place the insulation in 2 layers. Place the first layer between any service pipes, ensuring it is laid flat and in solid contact with the subfloor throughout. If necessary, fixings should be used to hold the insulation in place, avoiding rocking.



- (b) Fill any voids around the pipes, with a weak sand:cement mix and level off. Then place the 2<sup>nd</sup> layer of insulation over the 1<sup>st</sup> layer, ensuring it remains flat, with no rocking.



### INSTALLING EDGING STRIP AND PLASTIC MEMBRANE

- (a) Install the edging strip around all walls, taking care to ensure it is neatly placed into all corners at 90 degrees. Tack the edging strip to the walls using a staple gun as required to hold it in place.



- (b) Place 500 gauge plastic over the top of the insulation ensuring it is pulled tight with no creases. Overlap joints a minimum of 100mm and tape joints. Tape the 500 gauge membrane to the plastic skirt of the edging strip.

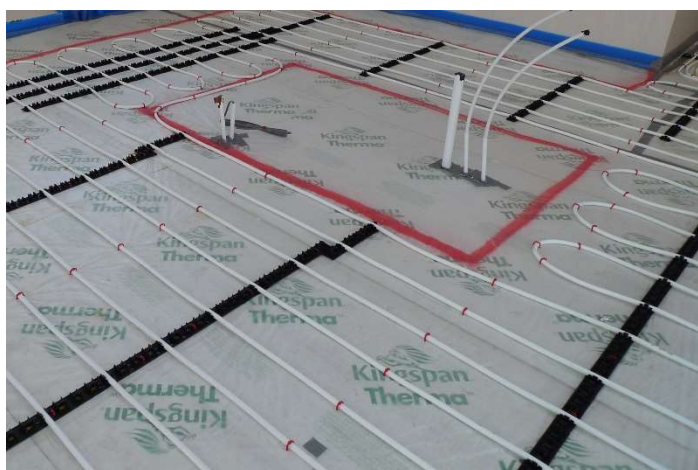


## INSTALLING UNDERFLOOR HEATING PIPES

- (a) Install the underfloor heating pipes, ensuring they are fixed down every 400mm along the length of the pipes and more frequently on bends.



- (b) Fill the underfloor heating pipes with water.



## EXPANSION JOINTS AND FINAL CHECK

- (a) Install expansion joints across doorways, where thin corridors open out to larger spaces and where the aspect ratio exceeds 1:6 (for further advice contact our Technical Team). Cut away notches on the underside of the joint to allow it to sit level over the UFH pipes.



- (b) Complete a final depth check to ensure there is at least 25mm cover over all pipes, paying particular attention to the corners of rooms.
- (c) Brush or vacuum out all debris from the surface of the plastic. Any material left will float once the screed is poured and this will result in blemishes on the surface once the screed has hardened. Inspect the whole tanking system for any tears or untapped joints, make good ready for screed to be poured.

## POURING OF THE SCREED

Only approved contractors can lay Ultraflo<sup>®</sup>. The contractor will arrive on site, set up the pump, check levels and agree a datum level with you. Once the mixer truck arrives with the screed the layers will commence pumping the screed. 6 cubic metres of Ultraflo<sup>®</sup> can be pumped in approximately 30 minutes. The screed is then dapped in two directions to level the surface and then left to dry.

## PROTECTION FOLLOWING INSTALLATION

Immediately after application and until the screed has hardened, keep windows and doors closed for 24 hours to protect the surface from frost, direct sunlight, draughts and water ingress.

Refer to the Ultraflo<sup>®</sup> Aftercare Guide for information on drying, priming and floor coverings etc.

**For more information please contact our  
Technical Department on (028) 9085 1441**