

**RTU**  
MORTAR / CONCRETE / PLASTER / SCREED



**zircon**  
POLISHED CONCRETE

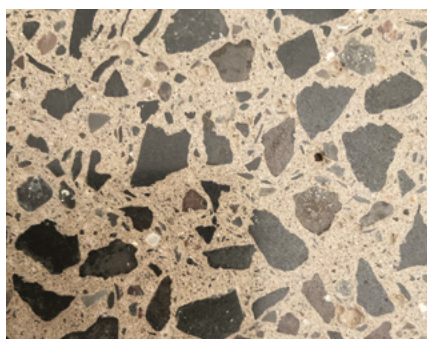
**THE DURABLE  
ALTERNATIVE TO  
NATURAL STONE**

A stylish, hardwearing and low maintenance product that delivers a seamless finish

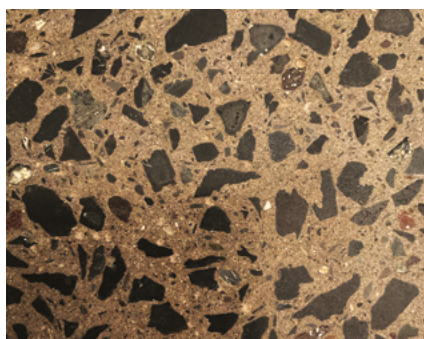
**Zircon is a stylish, hardwearing and low maintenance product that delivers a seamless finish and offers a chic and durable alternative to natural stone.**



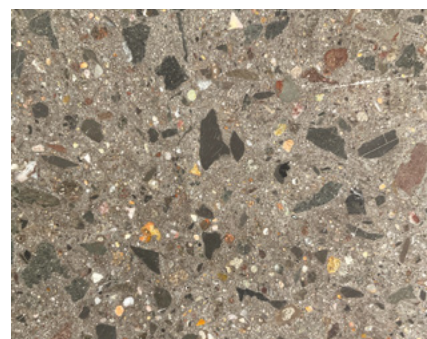
Where seamless concrete floors were once the preserve of specialist homes, RTU has developed an innovative and attainable product that makes a stunning design statement with an easy-to-care-for finish.



Amalfi Rock



Roman Court



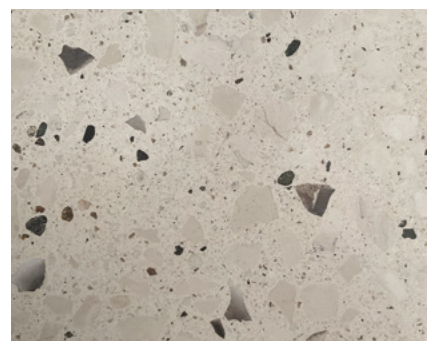
Pompei Black



Ambra Sands



Capri Bay



Sorrento White

**Whether your style is minimalist, rustic, modern or contemporary, Zircon comes in six colour ways with varying finishing options to suit any interior scheme.**

Disclaimer: Colours shown are for reference only and may not be an exact representation of the true colour



## This technically designed decorative concrete delivers a sleek polished floor that can be finished with various grades of polishing to achieve the desired look for your project.

Zircon currently has six colour options, which can be polished in one of three ways: a deep grind for a full marbled effect, a light grind to show some aggregate or a polished finish that delivers a smooth finish with no aggregate showing.

Once Zircon is installed, general vacuuming and mopping are enough to keep its lustre, and after several years the floor can be re-polished to bring back its sheen.

This is a product that looks great and performs brilliantly. Not only is Zircon compatible with underfloor heating, but it is also an excellent conductor of heat.

Due to its thermal mass, in spaces with high solar gain Zircon will absorb heat from sunlight which is then released during the night, creating a much more comfortable and controllable even temperature within the space.

### Benefits include:

- A stylish and seamless polished finish;
- Blends to minimalist, rustic or contemporary design;
- Stunning range of colours are available;
- Non-slip finish;
- Low maintenance and easy-to-clean flooring;
- Durable, perfect for areas with high levels of traffic;
- The options of a seamless indoor or outdoor finish;
- Compatible with underfloor heating;
- High Thermal mass, absorbing heat from solar gain.

RTU is a leading construction and building materials supplier in Northern Ireland of concrete, mortar, plaster and screed.

We are the first choice supplier for leading architects, construction companies, builders and the self-build sector.



### Contact our team:

Tel: 028 9085 1441

[sales@rtu.co.uk](mailto:sales@rtu.co.uk)

[www.rtu.co.uk](http://www.rtu.co.uk)



RTU LTD

Cloughfern Avenue, Newtownabbey, Co. Antrim, BT37 0UZ

