

**Before Ultracem<sup>®</sup>, liquid floor screed is poured, the building should be weather tight with the roof on and all doors and windows installed. Any openings which are not closed up should be made weather proof with polythene.**

## SUB-FLOOR PREPARATION

- (a) Scrape off any debris or mortar splashes from the subfloor.
- (b) Brush the subfloor, leaving a flat clean surface, on which to place the insulation.

## INSTALLING INSULATION

- (a) Place the insulation in two layers. Place the first layer between any service pipes, ensuring it is laid flat and in solid contact with the subfloor throughout. Place neatly around services to limit any voids when placing second layer.
- (b) Then place the second layer of insulation perpendicular to the first layer, ensuring it remains flat, with no rocking. If necessary, fixings should be used to hold the insulation in place, avoiding rocking.

## INSTALLING EDGING STRIP AND PLASTIC MEMBRANE

- (a) Install the edging strip (min 8mm thick compressible strip) around all walls, taking care to ensure it is neatly placed into all corners at 90 degrees. Tack the edging strip to the walls using a staple gun or mastic as required to hold it in place.  
(Note: Edging strip is in addition to any perimeter insulation sheets)
- (b) Place 500 gauge plastic over the top of the insulation ensuring it is pulled tight with no creases. Overlap joints a minimum of 100mm and tape joints. Tape the 500 gauge membrane to the plastic skirt of the edging strip. (Plastic greater than 500 gauge should be avoided, as creases can act as crack inducers.)



Insulation being laid



Edging strip being attached



Plastic membrane laid and taped

## INSTALLING UNDERFLOOR HEATING PIPES

- (a) Install the underfloor heating pipes, ensuring they are fixed down every 400mm along the length of the pipes and more frequently on bends.
- (b) Fill the underfloor heating pipes with water.
- (c) Ensure there is at least 25mm cover over all pipes, paying particular attention to the corners of rooms.

## MOVEMENT JOINTS AND FINAL CHECK

- (a) Install movement joints across doorways, where thin corridors open out to larger spaces and where the aspect ratio exceeds 1:2. Irregular shape rooms may also need joints for further advice contact our Technical Team.
- (b) Brush or vacuum out all debris from the surface of the plastic. Any material left will float once the screed is poured and this will result in blemishes on the final surface.
- (c) Inspect the whole tanking system for any tears or joints not taped, repair and make good ready for screed to be poured.

## PRECAUTIONS IN HOT WEATHER

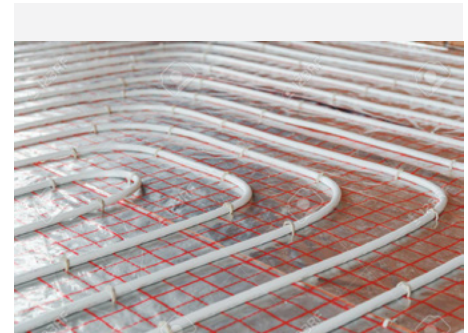
When the temperature exceeds 25°C Ultracem<sup>®</sup> should not be installed. In warm weather where there are large windows providing solar gain within a room these should be shaded to prevent excessive heat building up, prior, during and for 24 hours after the screed is poured.

## PROTECTION FOLLOWING INSTALLATION

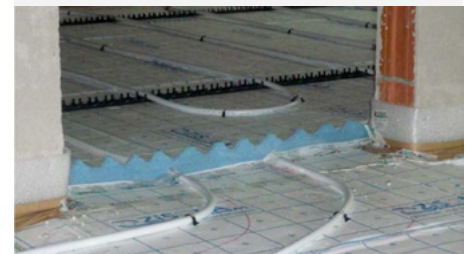
Immediately after application and until the screed has hardened, keep windows and doors closed for 24 hours to protect the surface from frost, direct sunlight, draughts and water ingress.

Refer to the **Ultracem<sup>®</sup> Aftercare Guide** for information on drying, and floor coverings application.

For more information, contact our Technical Department on (028) 9085 1441.



UFH pipes laid and clipped down



Movement joint

## GET IN TOUCH

T: +44 (0) 28 9085 1441

E: [info@rtu.co.uk](mailto:info@rtu.co.uk)

W: [www.rtu.co.uk](http://www.rtu.co.uk)



RTU Ltd.

Cloughfern Avenue

Newtownabbey

Co. Antrim, BT37 0UZ